

Now With  
Polyester  
Support



## Epson SureColor F2160 DTG

- Direct to garment low-cost customisation of shirts, bags, and more
- Epson UltraChrome® DG ink delivers crisp and bright images with a low tack finish, high stretchability and good wash/UV durability
- Improved performance and enhanced image quality with smoother gradation, an expanded gamut and Dmax
- New platen grip pads enable faster loading and setting
- Upgraded self-cleaning print head and new auto cap washing system for enhanced reliability, reduced maintenance and wastage
- Supplied with enhanced Epson Garment Creator application software
- Diethylene glycol free ensures for a safer work environment with Oeko-Tex™ certification so garments can be worn by adults, children and infants
- Available in high speed 4 colour and flexible 5 colour with White configurations
- Comprehensive warranty with service cover extendable up to 3 YEARS<sup>4</sup>
- Supports a wide range of garments with natural and man-made fibre content

# Epson SureColor Fabric Range SC-F2160 Desktop DTG System

## Product Specifications

PRINTING TECHNOLOGY	
Print Head	Epson PrecisionCore™
Print Modes	Uni and bi-directional
Configuration	4C: 720 nozzles per colour 5C: 360 nozzles per colour / 720 x 2 nozzles white
Maximum Resolution	1440 x 720 dpi colour / 1440 x 1440 dpi white
Minimum Droplet Size	12 pl
INK SYSTEM	
Ink Type	Epson UltraChrome® DG
Cartridge Configuration	4C: 2*C + Y + 2*M + K + CI 5C: CYMK + 2*Wh + CI
Cartridge Capacity	250 ml / 600 ml CYMKWh, 700 ml Cleaning
PERFORMANCE <sup>1</sup>	
4C Configuration	Fast: 9 s colour Production: 15 s colour
5C White Configuration	Fast: 15 s colour / 52 s white + colour Production: 27 s colour / 87 s white + colour
MEDIA SUPPORT	
Compatible Fabrics	Cotton, polyester and mixed fibre garments <sup>2</sup>
Max Thickness / Weight	25 mm / 1.5 kg per garment
Max Print Area	Large platen: 406 x 508 mm Medium and grooved platen: 335 x 406 mm
OPERATION	
Control Panel	2.5" colour LCD with USB PC-less Print feature <sup>3</sup>
Utility Software	Epson Edge Dashboard (DTG edition), communications driver; EpsonNet set-up, config & print
Application Software	Supplied with Epson Garment Creator with layout design, colour management, job costing and print control
Interface	USB 2.0 and Ethernet 10Base-TX/100Base-T
Memory	512 MB main + 128 MB network
ENVIRONMENTAL	
Operational Temp	10-35°C
Operational Humidity	20 to 80% (no condensation)
Power Supply	AC 240 V 0.4 A, 50 Hz - 60 Hz
Power Consumption	55 W operating / 22 W standby / 10 W sleep
Operating Noise	44 dB
PHYSICAL	
Printer (without ink)	985 x 1,425 x 490 mm (WxHxD), 85 kg
Shipping Carton (Main Unit)	1575 mm x 1190 mm x 852 mm (WxHxD), 145 kg

## WHAT'S IN THE BOX<sup>4</sup>

Printer, power cord, 1 x set 250 ml CYMK ink carts, 3 x cleaning carts, 1 x medium platen and grip pad, 1 x waste tank, 1 x maintenance kit, utility software, set up guide, user manual (on CD), Garment Creator s/w (via web download). Additional cotton pre-treatment liquid and 2 x 600 ml white ink carts included with 5C configurations.

## CONFIGURATION OPTIONS<sup>5</sup>

SCF2160D1Y	4C with 1 Yr On-Site Wty
SCF2160D3Y	4C with 1 Yr On-Site Wty + 2 Yr CoverPlus
SCF2160W1Y	5C with 1 Yr On-Site Wty
SCF2160W3Y	5C with 1 Yr On-Site Wty + 2 Yr CoverPlus

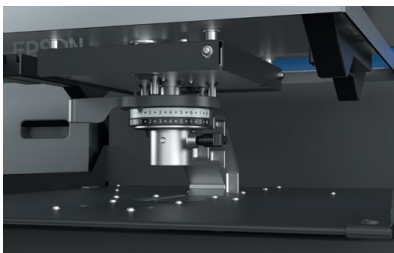
## OPTIONAL ACCESSORIES

C12C933921	Large platen
C12C933961	Grooved platen (for shirts with buttons or a zipper)
C12C933931	Medium platen (included with all configs)
C12C933941	Small platen
C12C933951	Extra small platen
C12C933971	Sleeve platen
1YWSCF2160	1 Yr CoverPlus
2YWSCF2160	2 Yr CoverPlus (included with 3 Yr configs.)

## CONSUMABLES

C13T736000	700 ml cleaning cartridge
C13T730100~400, A00	250 ml ink carts (Bk/C/M/Y/Wh)
C13T725100~400, A00	600 ml ink carts (Bk/C/M/Y/Wh)
C13T736100	20L Cotton pre-treatment liquid (concentrate)
C13T43R200	18L Polyester pre-treatment liquid
C13S092001	Head cleaning kit
C13T736200	Printer maintenance kit
C13S092021	Replacement air filter
C13S210075	Large platen grip pad
C13S210076	Medium platen grip pad
C13S210077	Small platen grip pad

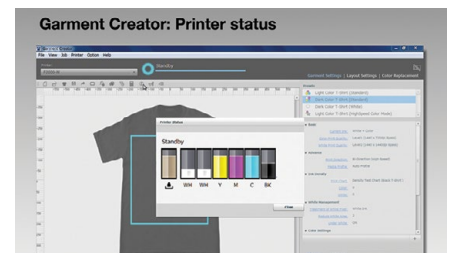
- Figures are print speeds only based on an image 254 x 203 mm in landscape; actual production times will depend on garment type and preparation, pre-treatment process, heat press operation, computing platform, file format/size and networking configuration.
- Optimised for output on garments with a moderate to loose weave and 50% or more cotton content. With the application of appropriate pre-treatment a wide range of single and mixed fibre garments can be supported however print adhesion and wash durability will vary. Customers who work with fabrics that have a tight weave &/or contain less than 25% cotton are recommended to perform testing prior to purchase &/or production.
- Images must be pre-processed through Garment Creator and stored on a USB device in FAT-32 format.
- The included ink is sufficient to 'prime' the printer and complete a small number of test prints; it is recommended that an additional ink set be ordered for production. The DTG process requires the use of a heat press; please consult your dealer about suitable models.
- Standard Warranty is 1 year for all non-consumable components including print heads when the printer is operated and maintained correctly and used with Genuine Epson UltraChrome DG ink. Cover can be extended up to a maximum of 3 years through the optional purchase of CoverPlus. Free on-site service is provided for limited areas across Australia and New Zealand (refer to the relevant web site for further information).



Interchangeable platens with enhanced height adjustment and optical sensing



Low maintenance design with improved self-cleaning print head and new auto cap washing system



Supplied with Epson Garment Creator S/W for Macintosh® and Windows®



Better Products for a Better Future

Epson is the registered trademark of Seiko Epson Corporation. All other names and company names used herein are for identification purpose only and may be the trademarks or registered trademarks of their respective owners. Epson disclaims any and all rights in those marks. All print samples shown herein are simulations. Specifications are subject to change without notice. V3.0 November 2018.

**EPSON**  
EXCEED YOUR VISION

FUJIFILM NZ Limited  
2C William Pickering Drive, Rosedale, Auckland 0632  
PHONE: 0800 242 646  
EMAIL: ffnz.customerservices@fujifilm.com  
WEB: wideformat.co.nz

**FUJIFILM**  
Value from Innovation